



# The Rugged xCase for Tab K10

android



# About MobileDemand

**MobileDemand is a leader in rugged, mobile technology**, committed to bringing more functionality and capabilities to firstline workers. Specializing in the design of integrated productivity tools for a myriad of on-the-go applications, the company is driving the future of mobile productivity.



Powered by **MAGTEK** **intel REALSENSE** **Honeywell**



©2021 MobileDemand, LC | All trademarks are property of their respective owners.



# Industrial-rugged protection for Tab K10

MobileDemand's rugged xCase provides unparalleled durability and extended life for the Lenovo Tablet K10. A powerful tablet—now combined with exceptional protection—opens the door to exciting new possibilities.

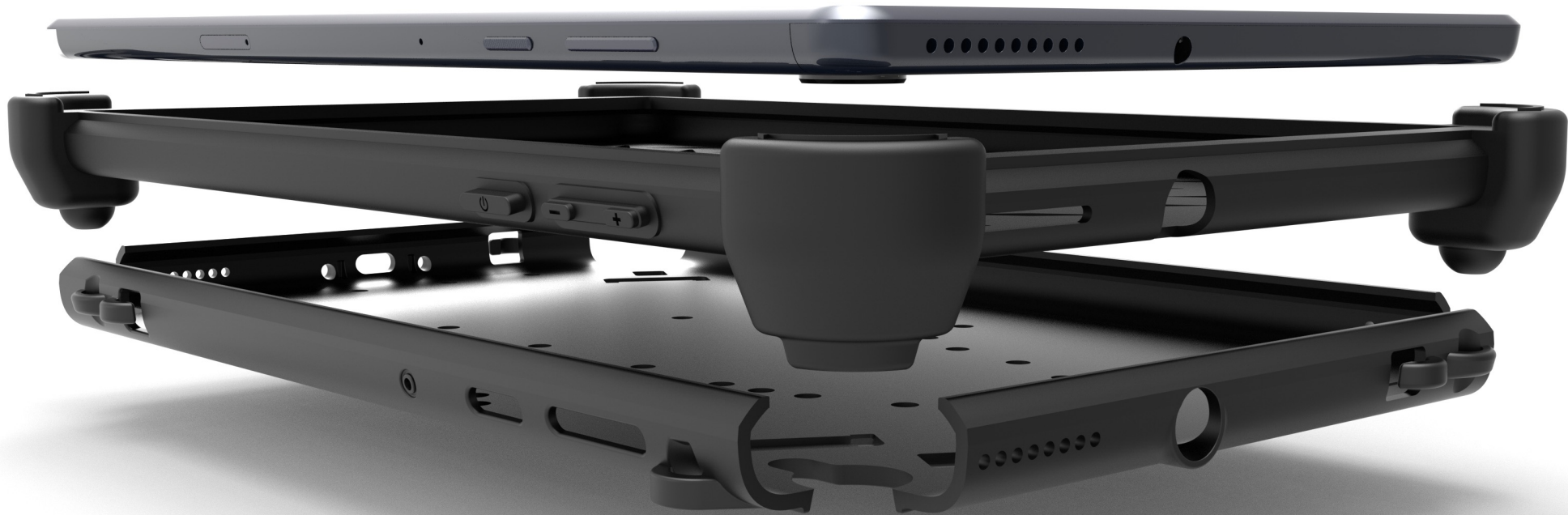
- Durable rugged construction
- Extreme protection
- Unlimited mounting solutions
- Sealed ports

**Expanding the capabilities of the Tab K10  
for real world rugged environments.**



# What makes it so tough?

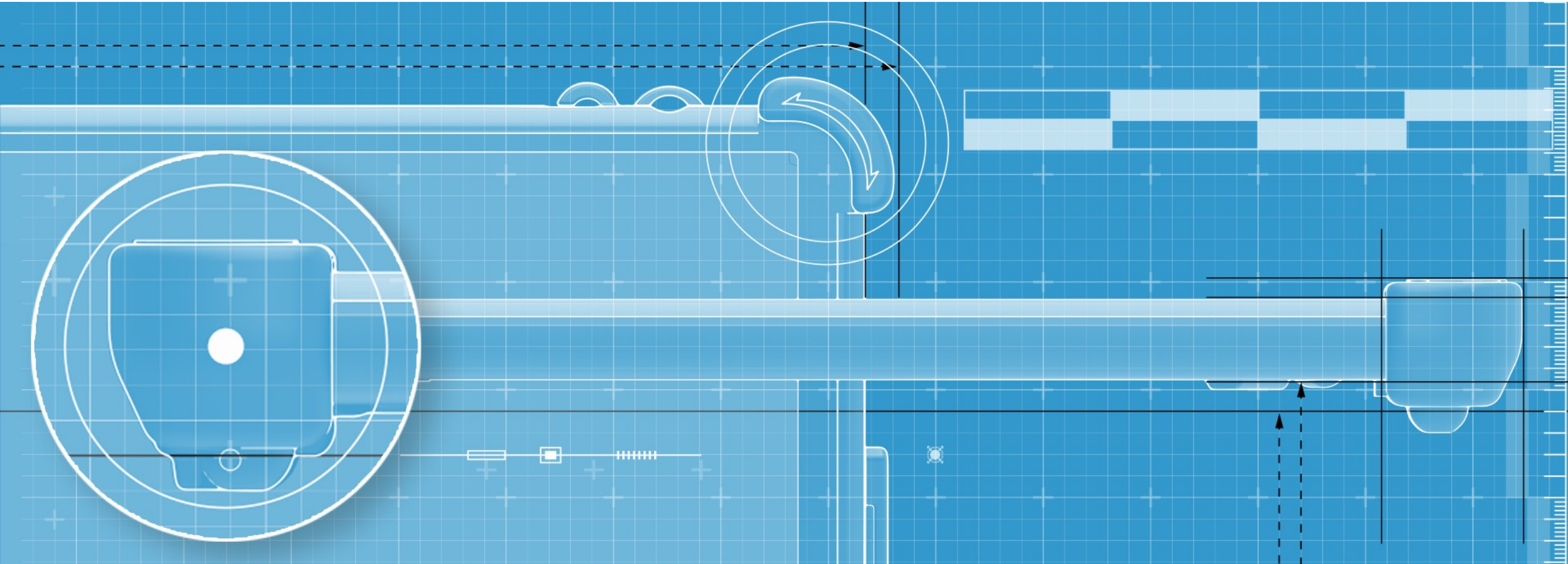
Extreme durability is made possible by the combination of a PC/ABS hard plastic outer shell and inner silicone rubber boot that fully encases the Tab K10. Rubber buttons and port seals offer an additional level of protection from dust and water.





# Rugged bumper protection

Raised rubber corner bumpers absorb impacts and provide exceptional protection for the screen and all edges.



# Drop tested

The xCase provides 360° protection, enabling the Tab K10 to pass rigorous military drop testing, consisting of 26 drops to all sides and surfaces from 5 feet. Shock absorbing rubber corner bumpers and ridged shell combine to offer unmatched tablet protection in the most demanding environments.







# Mounting



**Forklift mounting.** Heavy duty forklift mounting solutions are designed to hold the Tab K10 securely in place and withstand the continuous strain and vibration of a forklift.

Reinforced power cable connector kit specially designed to hold the cable securely in place during forklift use.



# Mounting



**Vehicle mount.** Bolt-on and no drill mounting options are available with a universal fit to accommodate a variety of vehicles and applications. Perfect for law enforcement, ambulance, public safety, field service, food and beverage distribution, transportation and more.





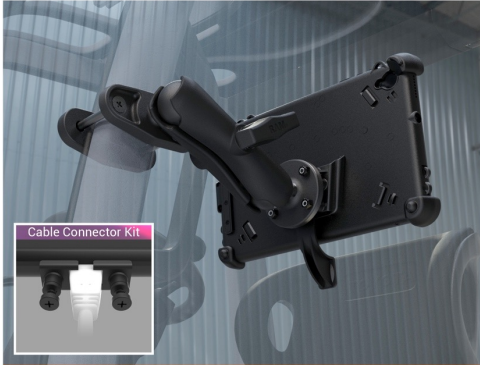
# Mounting



**Fixed mounting.** The Quick Release Snap Mount System allows the Tab K10 to be securely mounted one minute and on-the-go the next. All made possible by the patented snap plate that comes standard on every rugged xCase. An available locking mechanism ensures security for a permanent solution. Mounting to desks, walls, counter tops, kiosks, carts, tripods and so much more is simply a snap.



# Mounting Kits



## Post/Forklift Mount Kit

Kit includes everything needed for mounting on posts up to 4" and forklifts. Clamping base, medium length C size RAM double socket arm, C-ball and socket, spacer and snap mount rail are included. When connecting a power supply, we recommend the Cable Connector Kit (inset photo).



## Desktop Mounting Base Kit

Kit includes heavy duty base, RAM mount arm (5.69" length), 2 C ball sockets and snap mount rail. Perfect for non-permanent counter top or desktop mounting applications. Easily relocate tablet without having to unmount the device. It's a well balanced, steady and secure mounting solution.



## Wall Mount Kit

Kit includes a RAM mount arm, 2 round plates with C-balls, snap mount rail, zip ties and anchors. Extreme flexibility allows mounting the Lenovo tablet to a wide variety of applications when a permanent and secure solution is required.



## No Drill Vehicle Mount Kit

Kit includes no-drill base that attaches to the passenger seat floor bolt, C-ball extension rod, RAM arm, C-ball with plate and snap rail. Easily mount your Lenovo tablet in virtually any vehicle. The quick release mechanism enables quick transitions from vehicle to field operations.



## VESA Mount, Snap Rail Kit

Kit includes VESA mount plate and snap mount rail. Securely attaches to a wide variety of bolt-on surfaces for a convenient quick release mounting solution. Perfect for walls, reception areas, kiosks and more.





# Easy carry

Fatigue quickly becomes a factor during a long workday. That's why every xCase is equipped with an easy carry briefcase handle and back hand strap. Elastic bands hold the hand securely yet comfortably, eliminating the strain that comes from holding a tablet throughout the day.



# Accessories

Several accessories come standard with every xCase, including an easy carry briefcase handle and back hand strap along with the patented snap mount. Additional add-ons, adjustable easel, stylus holder and tether may be purchased separately.

- A** – Briefcase handle (included)
- B** – Back hand strap (included)
- C** – Snap mount (included)
- D** – Adjustable easel
- E** – Stylus holder (pen sold separately)
- F** – Stylus tether





# Markets & applications

- Retail
- Healthcare
- Manufacturing and Warehousing
- Oil and Gas





Rugged xCase and Bundle

[VIEW](#)



Lenovo Tab K10

[VIEW](#)

# Thank You

Contact our sales team today | [sales@mobiledemand.com](mailto:sales@mobiledemand.com) | 319.363.4121