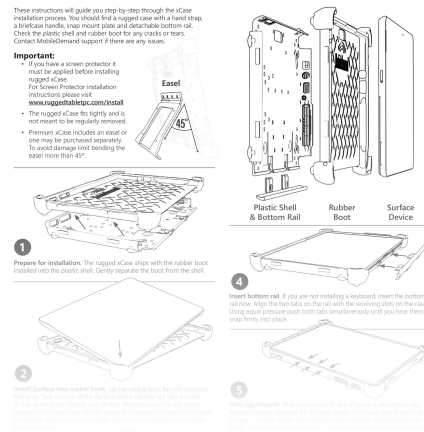




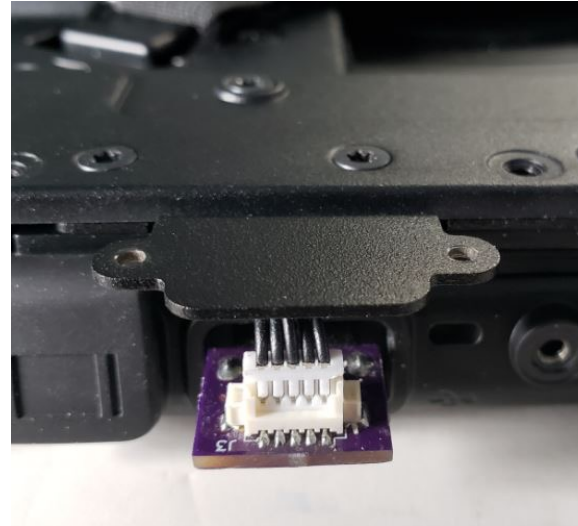
Surface Pro Scanner Installation

Scanner only assembly for Surface Pro

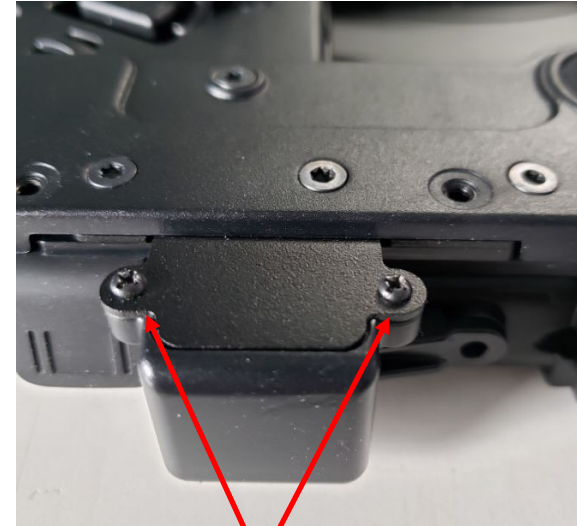
xCase for Surface Installation Instructions



1 - Insert tablet into the case per the instructions on insert.



2 - Insert type a pcb into usb port



3 - Install USB Cover using 2 M2x3mm PH screws



4 - Install 1 M3x5mm wafer head screw