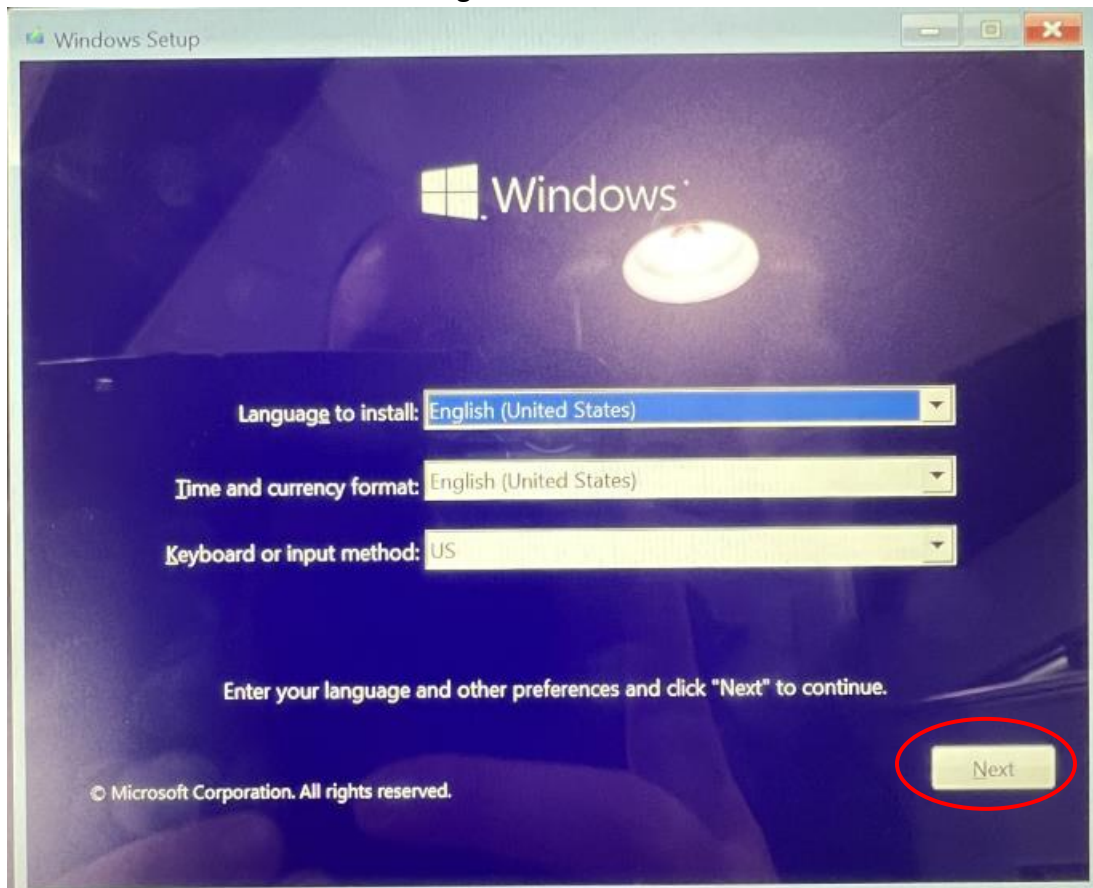
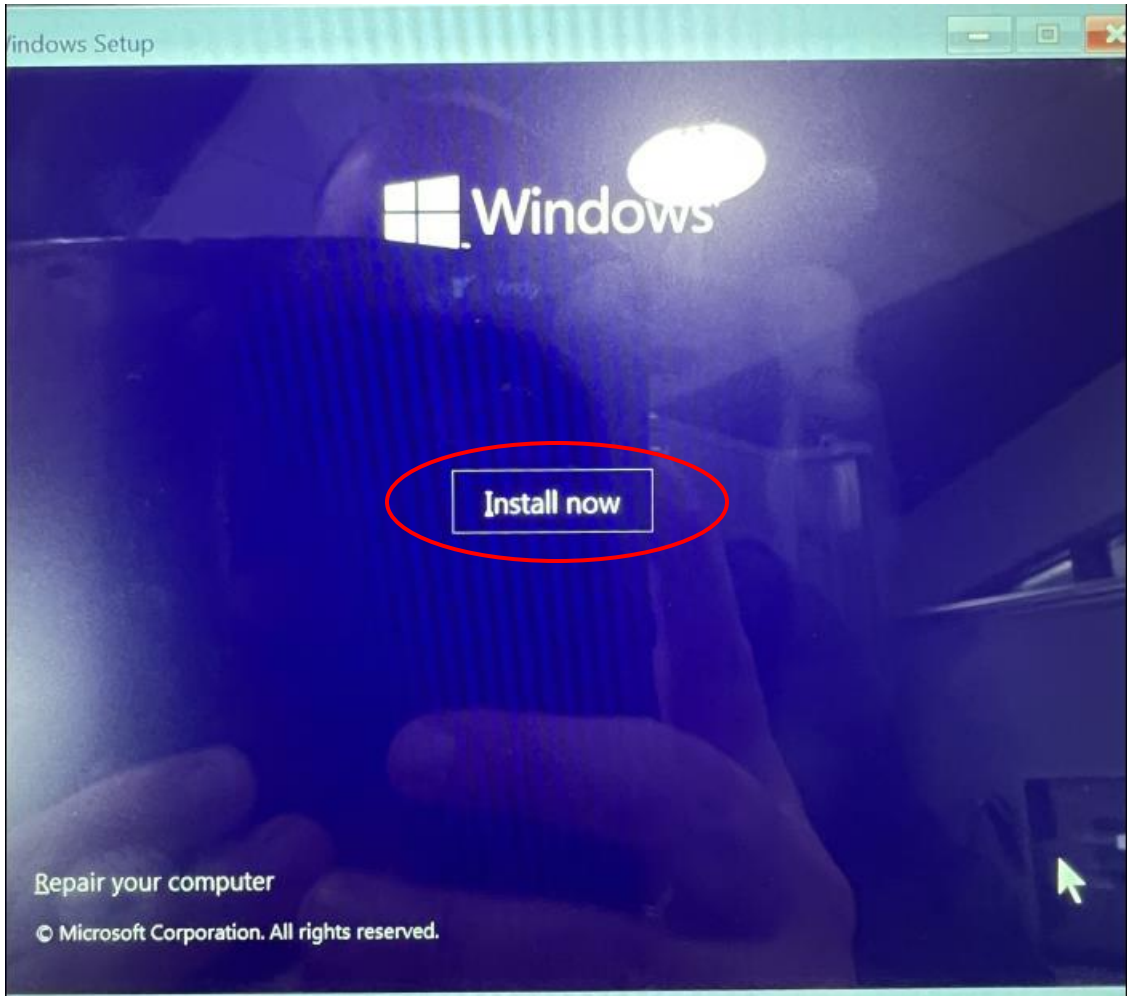


Install Mobile Demand Base Image Utilizing a USB Drive

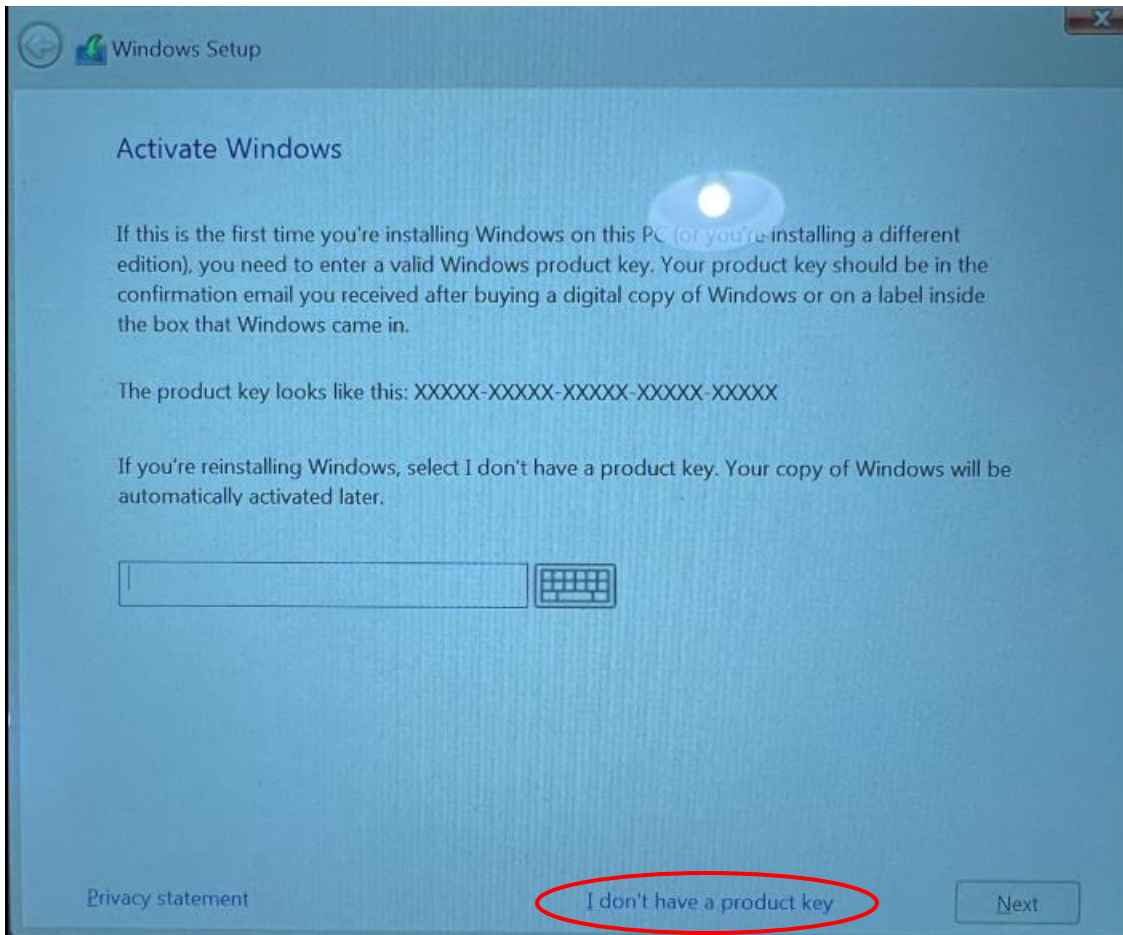
- Follow the link provided to download the .zip file that contains the .iso needed for installation
- Unzip the file to your preferred location
- Utilizing Rufus (<https://rufus.ie/en/>) or your preferred .iso burning tool, burn the .iso to your portable flash drive (16GB minimum)
- Boot into the removable USB drive using the “F12” key to get to the boot menu
- You should now see the below image:



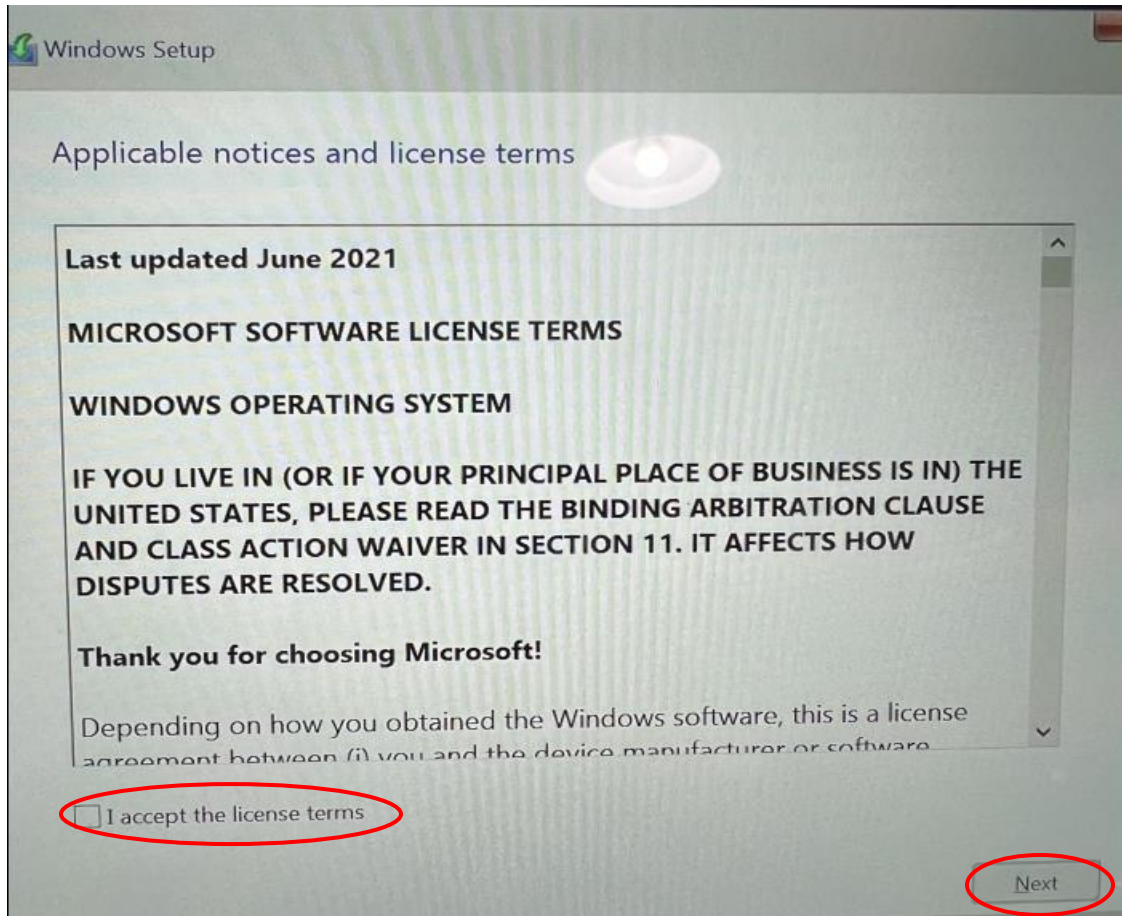
- Click on “Next”



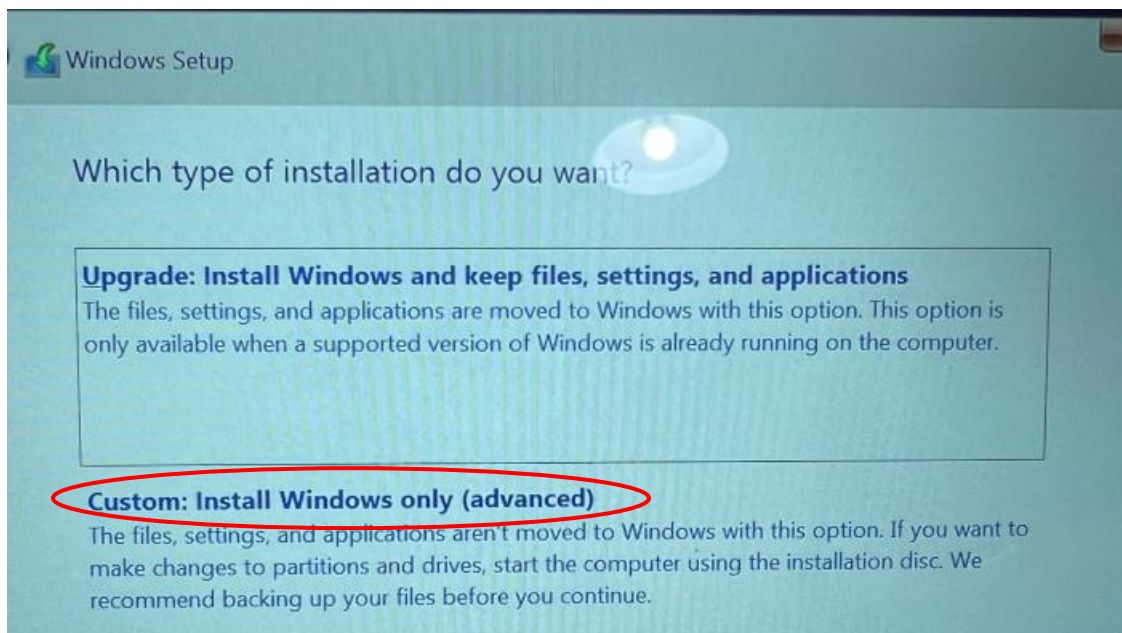
- Click "Install now"



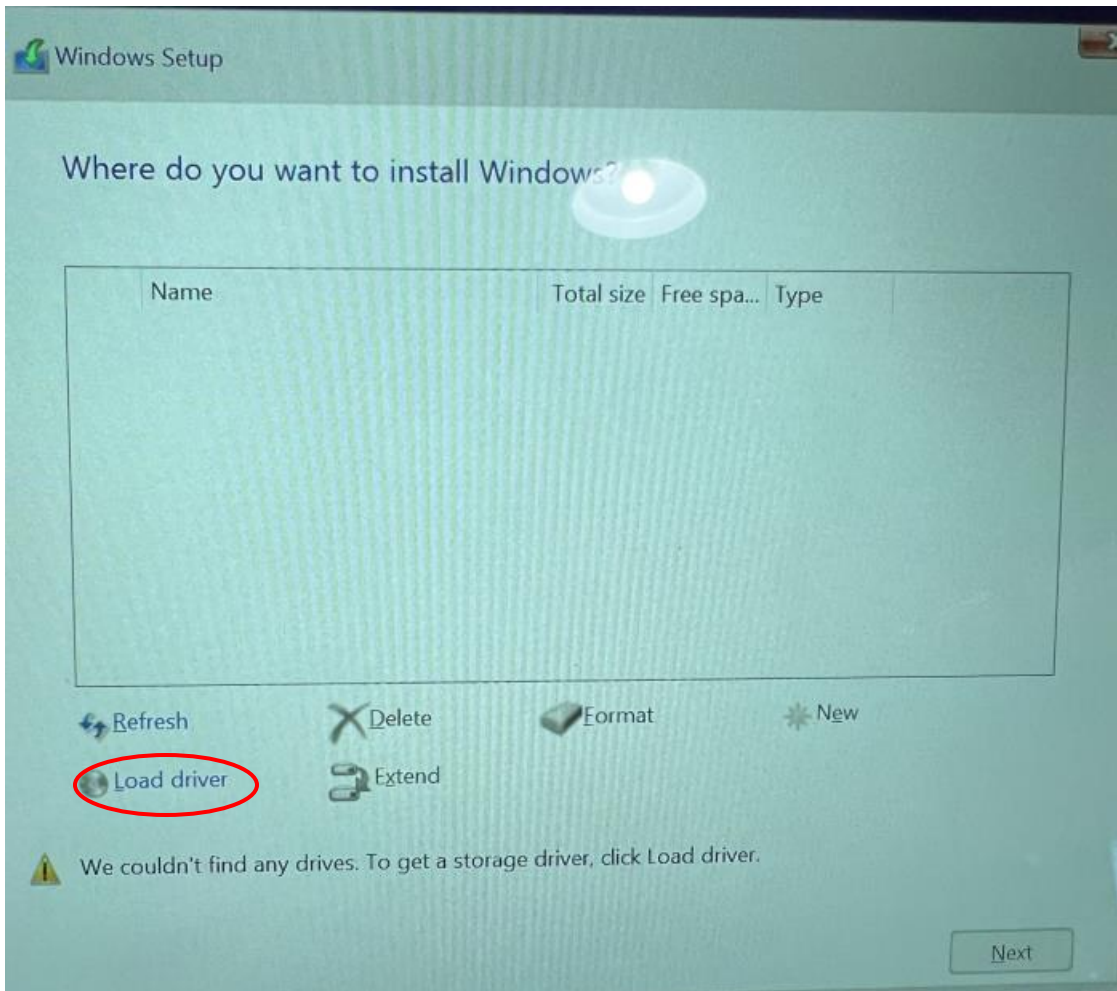
- Click on "I don't have a product key"



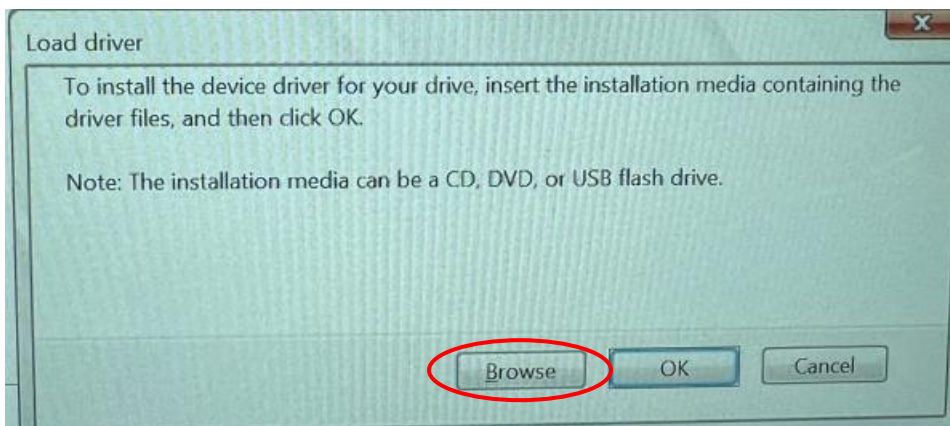
- Click the check box "I accept the license terms" and then click "Next"



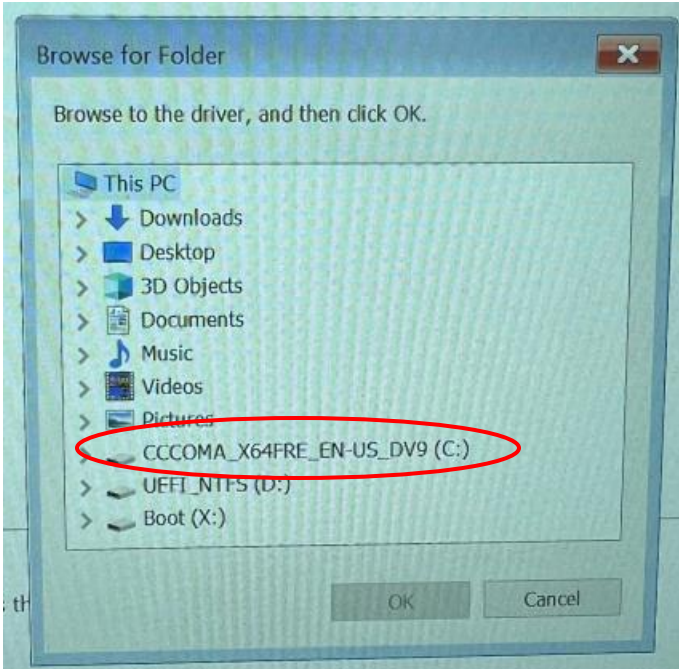
- Click on "Custom: Install Windows only (advanced)"



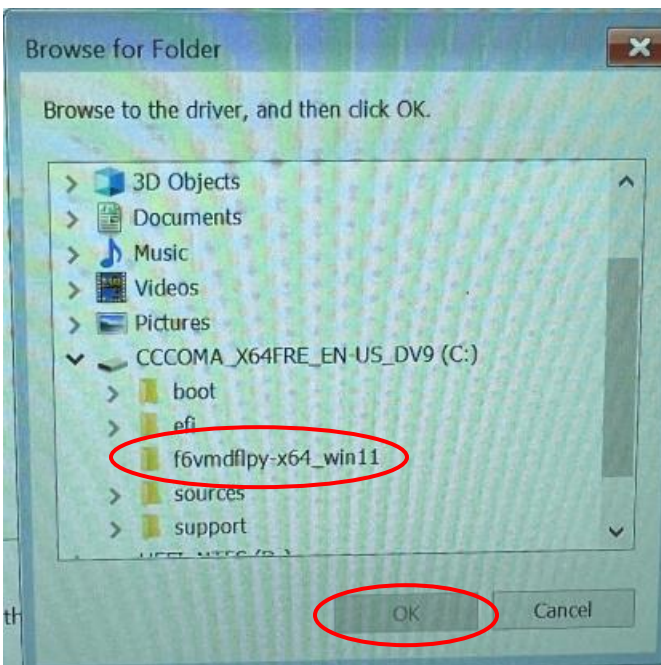
- You should now see the image above on your device. We are going to load the driver required for HDD visibility next.
- Click on “Load driver”



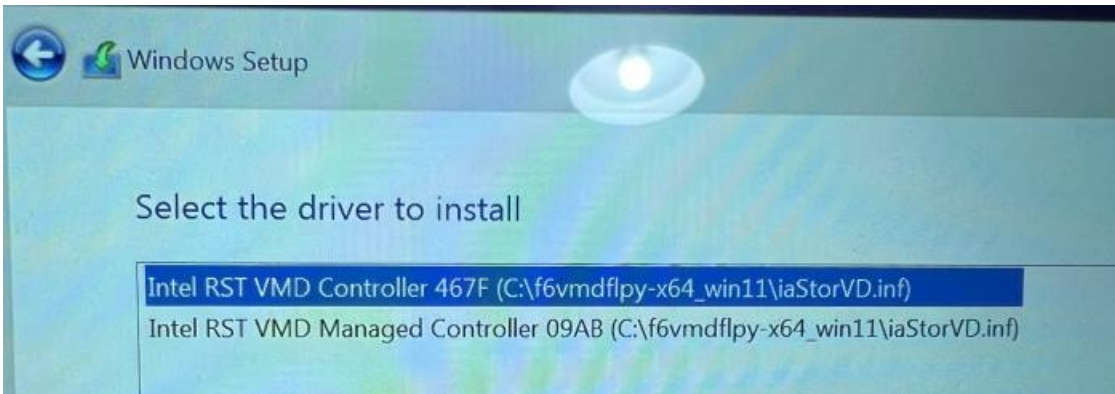
- Click on “Browse”



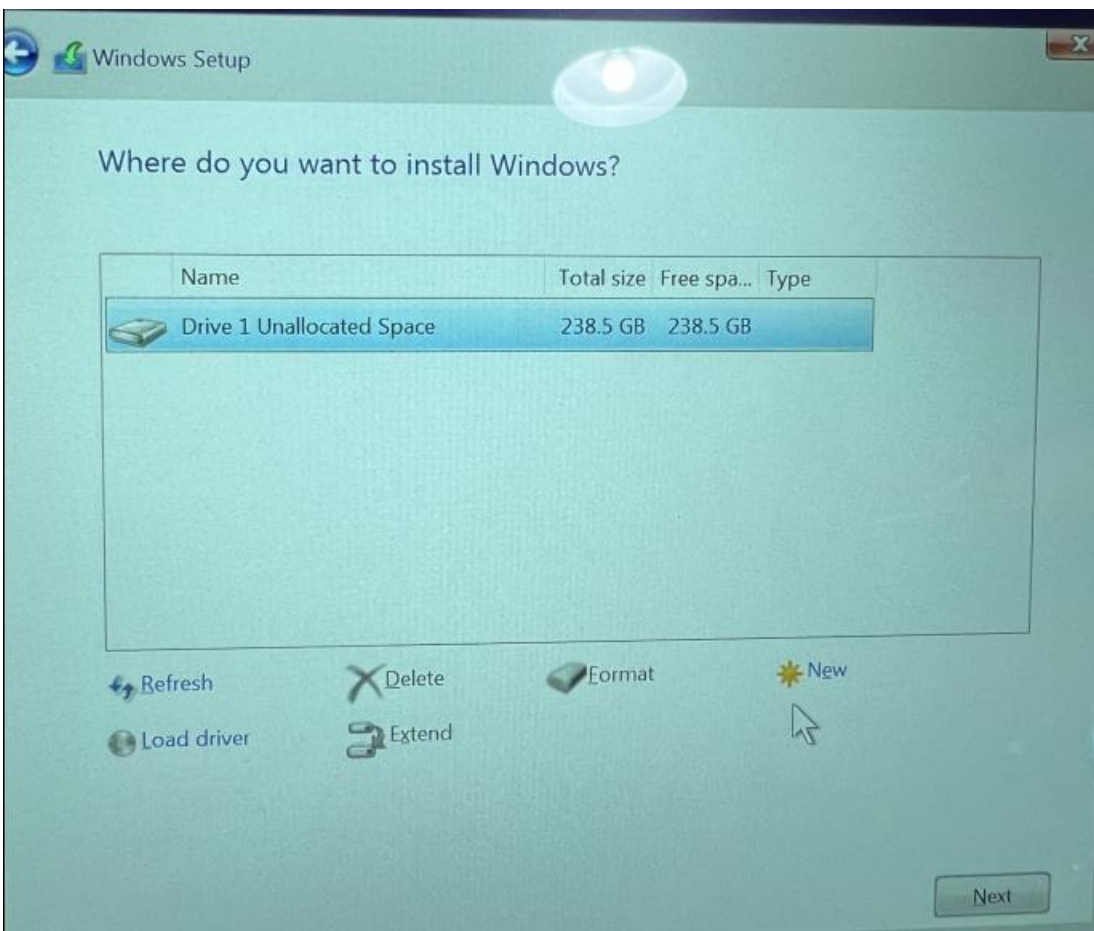
- Navigate to the USB media that we booted the installer from, in this instance the USB is the “C:\” drive with the name “CCCOMA_X64FRE_EN-US_DV9 (C:)”



- Expand the selection from the previous step and you will see a folder called “f6vmdflpy-x64_win11”
- Select that folder and click on “OK”



- You will now see a list of available drivers that are compatible with the device
- Select the 2nd option in the list, even if you are installing Windows 10. "Intel RST MVD Manager Controller 09AB (C:\f6mdflpy-x64_win11\iaStorVD.inf)"
- Click on "Next" once the driver is selected
- Wait for the driver to install



- The HDD is now visible to the device and we can now install Windows on the HDD

- If your device has multiple partitions visible in the screen image above, please select all partitions and delete the partitions. Once they are deleted you will see “Drive 1 Unallocated Space”
- Once all partitions are deleted and you have selected the unallocated space, click on “Next” to initiate the installation
- Wait for processing
- Mobile Demand’s base image is now installed on your device